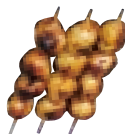
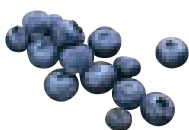




# Tokorozawa

## Tourist Guidebook



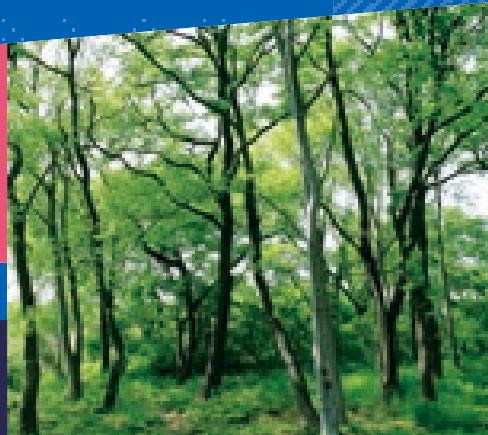
*so cool, so beautiful,  
and so natural town.*

# 08

Fall in love with  
Tokorozawa.  
areas of Tokorozawa

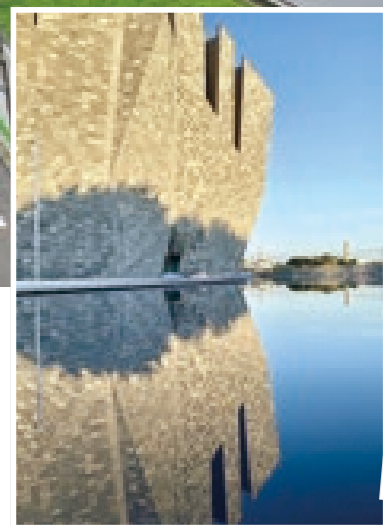


© Kadokawa Culture Museum

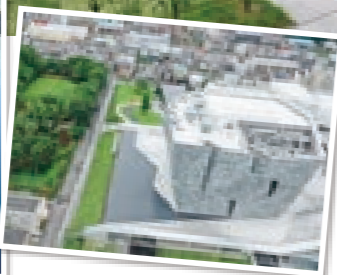


Everything is cool and beautiful.

These are the spots everyone is talking about.



© Kadokawa Culture Museum



• Tokorozawa Sakura Town •

The base facility for the "COOL JAPAN FOREST Plan", a joint project by Tokorozawa City and KADOKAWA, which aims to create cutting-edge culture and industry in an area rich in greenery and spread this throughout the world. This facility is attracting a lot of attention as one of the largest bases in the country for the dissemination of pop culture. In addition to the Kadokawa Culture Museum, a cultural complex containing a library, art gallery, and museum, it includes a hotel established in collaboration with animations and video games, indoor and outdoor event spaces, a shrine, shops, and restaurants.

📍 3-31-3, Higashi-tokorozawa Wada, Tokorozawa City  
☎ 0570-017-396 (10:00 - 17:00) Opening hours vary by facility  
🚶 10 minutes on foot from Higashi-tokorozawa Station on the JR Musashino Line **MAP** E-2



Take some really photogenic pictures at a water feature which is rumored to be just like the Salar de Uyuni salt flats! All of the members JAY'S GARDEN hope that we can do a live performance at Tokorozawa Sakura Town's 1,000 People Terrace or Japan Pavilion soon!



Tokorozawa Tourism Ambassador Atsushi Otani, JAY'S GARDEN

EJ Anime Hotel



"EJ" stands for "Entertainment Japan". A concept hotel in which most of the guest rooms are collaborations with popular animations, video games, or pop idols. Each room is equipped with video, audio, and lighting equipment which allows you to enjoy the world of that particular production to the full, so that you can truly enjoy the feeling of "staying" inside it.



© Kenji Miura

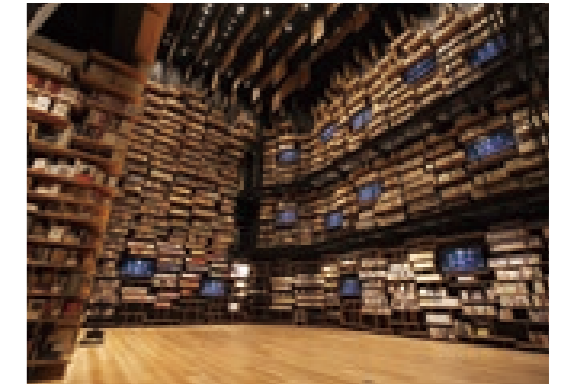
Kadokawa Culture Museum



A cultural complex combining a library, art gallery, and museum. The architect Kengo Kuma was responsible for supervising its design, including that of its stunningly impressive exterior. Each floor stimulates all the senses of those who visit: the "Bookshelf Theater" "Manga and Light Novel Library", for example, is a space surrounded by giant bookshelves about 8 meters high which house around 30,000 books.



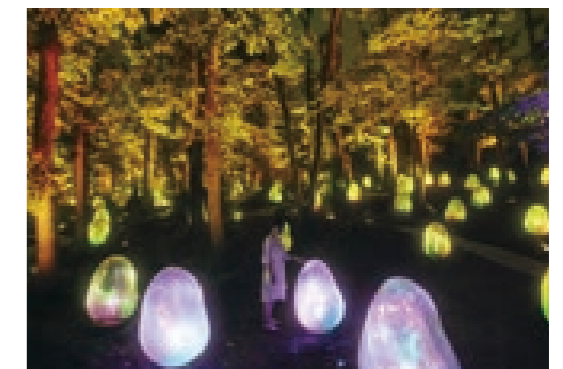
© Kadokawa Culture Museum



© Kadokawa Culture Museum

Musashino Woods Park  
teamLab Resonating Life in the Acorn Forest

In the Musashino Woods Park inside Higashi-tokorozawa Park, which adjoins Tokorozawa Sakura Town, you can enjoy "teamLab: Resonating Life in the Acorn Forest", a fantastic space with an installation using light which is a permanent display. The rows of ovoid structures reflect the light, changing depending on the time of day or the presence of people. Enjoy the various expressions created by the trees and shrubs of Musashino.



teamlab: Resonating Life in the Acorn Forest, Tokorozawa, Saitama ©teamlab



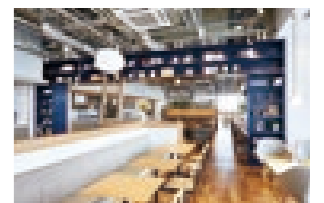
Musashino Reiwa Shrine

Architect Kengo Kuma supervised the design of Musashino Reiwa Shrine, while Japanese literature scholar Susumu Nakanishi named it. Various festivals and events are held throughout the four seasons at this new shrine, which combines the attractive aspects of both old and new and is aptly named with the characters for the Reiwa era.

Canteen KADOKAWA



This cafeteria for KADOKAWA's staff is open to everyone and specializes in meal sets. It offers a wide variety of dishes using plenty of fresh local ingredients, including meal sets, curry, rice bowls, and noodles. Its signature dish is "KADOKAWA Cafeteria Blend Curry", researched and developed by KADOKAWA staff and the chefs. You can also enjoy café food and drinks.



YOT-TOKO, Tokorozawa City's tourist information and local products center

YOT-TOKO brings together Yoi (good), Oishii (delicious) and Tanoshii (fun) things from Tokorozawa City, with a lineup of Tokorozawa brand special products, vegetables carefully selected by local farmers, and souvenirs from the surrounding cities. It also has an exhibition of traditional crafts from around the city and a tourist information corner. Inside the building is JIGONA café, which uses Tokorozawa flour as an ingredient.

📍 143-3 Oaza Matsugo, Tokorozawa City ☎ 04-2968-5414 9:00 - 17:00 Open all year round **MAP** E-2





Welcome to Totoro's Forest.

Right, it's time to take a deep breath.



### Totoro's Forest

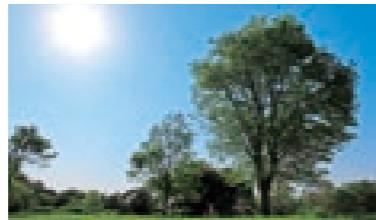
The Sayama Hills are said to have been one of the settings for the movie "My Neighbor Totoro", directed by Hayao Miyazaki. Totoro's Forest, located on these hills, is land acquired with donations collected from citizens and businesses by the "The Totoro Foundation", established in order to conserve natural and cultural heritage. It is held in trust, and operated and maintained by volunteers. There are currently 56 plots of land. (As of January Reiwa 4/ 2022).

◆ Plot No. 1, Totoro's Forest/ 351 Kami-yamaguchi, Tokorozawa City **GO** 7 minutes on foot from stop 21, "Horiguchi" of Tokoro Bus "Yamaguchi Circular Course" **MAP** B-3

© The Totoro Foundation

### Sayama Hills

A range of hills straddling the boundary between Saitama Prefecture and Tokyo Metropolis, measuring 11 kilometers from east to west and 4 kilometers from north to south at the broadest points. It is a precious natural location where valuable species of animals and plants remain, and has been designated as the Saitama Prefectural Sayama Nature Park. **MAP** ABC-3



### Hira no Oka (Hill)

A hill 155 meters high, located on the western side of Sayama Hills. From the top, you have a superb view over the city. You can spend a relaxing time here as you enjoy the scenery. ◆ 452 Horinouchi, Tokorozawa City **GO** 20 minutes on foot from stop 27, "JA Mikajima Shiten-kita" of Tokoro Bus "Shin-tokorozawa/ Mikajima Course" **MAP** A-2

### Lake Sayama

An artificial lake which serves as a reservoir for Tokyo. A mixed forest grows on its shores, and you can enjoy the beautiful scenery of each season. On a fine day, you can sometimes see Mount Fuji on the other side of the lake. The cherry blossom in spring is one of the sights not to be missed, as is the fall foliage. The various changing faces of Lake Sayama, from season to season and hour to hour, are what gives the lake its charm. **GO** 10 minutes on foot from stop 21, "Horiguchi" of Tokoro Bus "Yamaguchi Circular Course" **MAP** AB-3

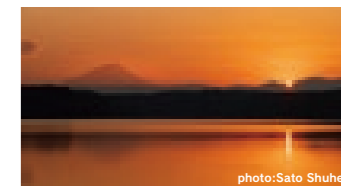


photo:Sato Shuhei

### Sayama Hill Flora and Fauna Interaction Center

The central facility, which serves as the hub for various walks. You can learn about and gain a deeper understanding of the nature of the Sayama Hills. Inside the center are various facilities including a special exhibition room, observation balcony, and lecture hall, and nature observation sessions are held periodically. Free walking maps are distributed, so be sure to visit here to obtain information on Totoro's Forest and other locations. ◆ 782 Arahata, Tokorozawa City ☎ 04-2939-9412 9:00 - 17:00 Closed Mondays (except where Monday is a national holiday or holiday in lieu of this, when the Center is open), the day after national holidays (except where this falls on a Saturday, Sunday, or national holiday, when the Center is open), and the New Year's holiday period **GO** 15 minutes on foot from stop 18, "Shimo-yamaguchi Eki Iriguchi" of Tokoro Bus "Agatsuma Circular Course", or stop 17, "Shimo-yamaguchi Eki Iriguchi" of Tokoro Bus "Yamaguchi Circular Course", departing from Shimo-yamaguchi Station on the Seibu Sayama Line **MAP** C-3



### Arahatafuji

One of the largest artificial recreations of Mount Fuji in the country, built by hand over a period of 15 years and completed in Meiji 32 (1899). It is very close to the Flora and Fauna Interaction Center. ◆ 748 Arahata, Tokorozawa City **MAP** C-3

### Corot Rental Farm and Japanese Guest House

A rental farm with a traditional farm house built over 100 years ago. You can enjoy life in the style of the good old days with the hearth, kitchen range, and wood-fired bath. You can also use the accommodation facilities. ◆ 2040 Yamaguchi, Tokorozawa City ☎ 04-2930-4202 **GO** 15 minutes on foot from Shimo-yamaguchi Station or Seibu Kyujo-mae Station on the Seibu Sayama Line. **MAP** B-3



### Kurosuke's House

"Kurosuke's House" is a traditional farmhouse built over 100 years ago. The Totoro Foundation manages it as the base for activities to conserve the nature of the Sayama Hills. The main house, warehouse, and tea factory are nationally registered tangible cultural properties. It is open to the public on Tuesdays, Wednesdays, and Saturdays, and you can experience the feel of an old farmhouse. Visitors are requested to understand the purpose of the Foundation's activities, and to make a donation to the "The Totoro Foundation" for the repair and upkeep of the house. ◆ 3-1169-1 Mikajima, Tokorozawa City ☎ 04-2947-6047 Opening hours: 10:00 - 15:00 Tuesdays, Wednesdays, and Saturdays (closed on national holidays and during the Obon and New Year's holiday periods) \*The house may be temporarily closed from time to time. Please check the website before visiting. **GO** 5 minutes on foot from "Dainichido" bus stop of Seibu Bus for "Miyadera-nishi" or "Waseda Daigaku" departing from the South Exit of Kotesashi Station on the Seibu Ikebukuro line. **MAP** B-2





### Spots around the Sayama Hills

An abundance of nature remains in the area around Lake Tama and Lake Sayama, which straddle the boundary between Tokyo Metropolis and Saitama Prefecture. This is an oasis where you can encounter the nature and beautiful scenery of managed woodland.



**Higashi-yamato City Folk Museum**  
(Higashi-yamato City)

The museum's main theme is "Living with the Sayama Hills". Projects related to the area's history, folklore, and nature take place not only within the building but throughout the Sayama Hills. **📍** 1-260-2 Narahashi, Higashi-yamato City **☎** 042-567-4800 9:00 - 17:00 Closed Mondays and the day after a national holiday (except where this falls on a Saturday, Sunday, or national holiday)



**Tokyo Metropolitan Sayama Park**  
(Higashi-murayama City / Higashi-yamato City)

A park on the eastern side of Lake Tama (Murayama Reservoir), where the managed woodland scenery and nature of Musashino still maintain a strong presence. With wild and cultivated cherry trees as well as the Yoshino variety, it is a beloved cherry blossom-viewing location. **📍** 3-17-19 Tamakocho, Higashi-murayama City **☎** 042-393-0154 (Sayama Park Center) 8:30 - 17:30



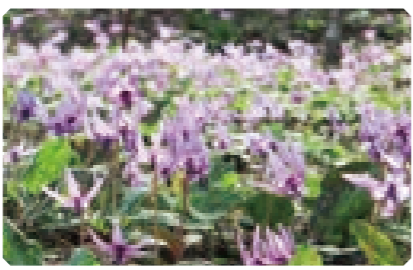
**Tokyo Metropolitan Hachikokuyama Park**  
(Higashi-murayama City)

The entire park is covered by mixed forest including pin oak and sawtooth oak, and you may catch sight of various wild birds and insects. The 1.9 kilometer One Path, which runs from east to west along the boundary between Tokyo and Saitama, has just the right amount of ups and downs, making it ideal for walking or hiking. **📍** 2/ 3 Suwacho/ 2 Tamakocho, 3/4 Noguchicho, Higashi-murayama City **☎** 042-393-0154 (Sayama Park Center) 8:30 - 17:30



**Saitama Midori-no-mori Nature Park**  
(Iruma City)

A field museum where the managed woodland scenery of the Sayama Hills, including mixed forests and wetlands, is itself the outdoor exhibit. You can encounter and observe nature while strolling along the nature observation trails. **📍** 889-1 Miyadera, Iruma City **☎** 04-2934-4396 9:00 - 17:00 Closed Mondays and the day after national holidays (except where this falls on a Saturday, Sunday, or national holiday), Closed over the New Year holidays



**Sayama Katakuri-no-sato**  
(Mizuho Town)

A colony of over 200,000 dogtooth violets, a rarity in the Tokyo area. When spring arrives, beautiful dogtooth violet flowers cover an entire slope around 3000m<sup>2</sup> in area. **📍** 243-1 Komagata Fujiyama, Oaza, Mizuho Town, Nishi-tama District **☎** 042-557-7659 (Construction Section, Urban Development Division, Mizuho Town) 9:00 - 17:00 (until 16:00 between November and February)

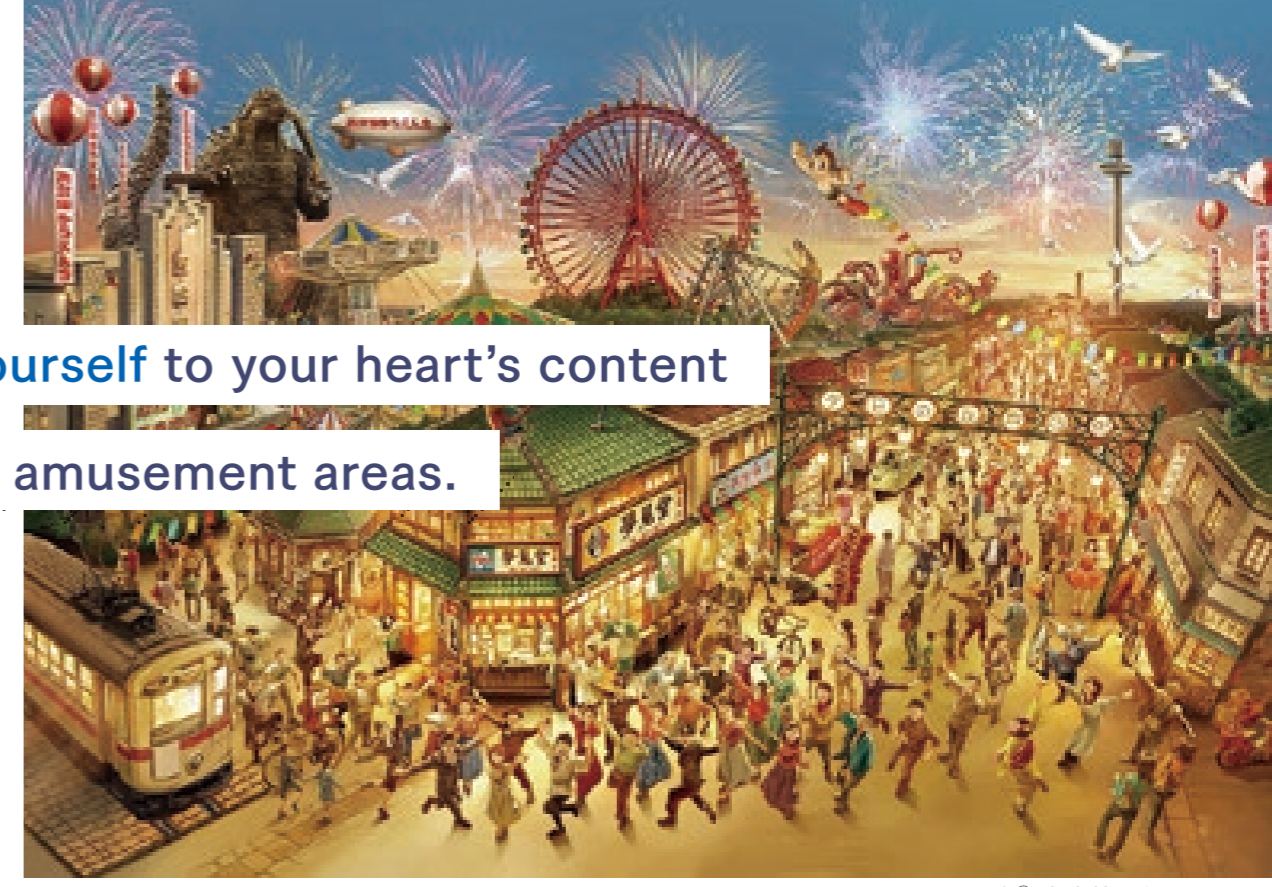


**Tokyo Metropolitan Noyamakita/ Rokudoyama Park**  
(Musashimurayama City / Mizuho Town)

The largest of the Tokyo Metropolitan parks, where a combination of mixed forests and ravines carved into the hills have preserved an abundance of nature. You can enjoy various activities including hiking, watching wild birds, and experiencing managed woodlands. **📍** 4-2 Mitsugi, Musashimurayama City **☎** 042-531-2325 (Noyamakita/ Rokudoyama Park Information Center) 8:30 - 17:30



Enjoy yourself to your heart's content in these amusement areas.



TM & © TOHO CO., LTD.  
© TEZUKA PRODUCTIONS

### Seibuen Amusement Park



Seibuen Amusement Park reopened in 2021 after refurbishment, with the concept of "a world which surrounds you with a heartwarming feeling of happiness". The new amusement park recreates an old-time townscape to an astonishingly high standard so that, by encountering characters from that era, eating nostalgic foods, and listening to unscheduled live performances that are full of human warmth, you will be enveloped in the

atmosphere and find yourself drawn into that world. Moreover, a new attraction, "Godzilla The Ride - Ultimate Showdown of the Great Monsters", has recently been added, bringing you thrills and excitement. **📍** 2964 Yamaguchi, Tokorozawa City **☎** 04-2922-1371 10:00 - 17:00 (subject to change depending on the day) No scheduled holidays **GO** Right beside Seibuen Yuenchi Station on the Seibu Yamaguchi Line. **MAP** C-3

### Saitama Seibu Lions



Saitama Seibu Lions are a professional baseball team based in Tokorozawa City, Saitama Prefecture. The team aims to be loved by its fans, to share the emotions of the game with them, and to be rooted in the local community.



© SEIBU Lions / TEZUKA PRODUCTIONS



### Belluna Dome

A bright and open stadium without any surrounding walls, in the midst of the natural setting of the Sayama Hills. You can enjoy various events and baseball ground delicacies on days when the Saitama Seibu Lions are playing a game. **📍** 2135 Kami-yamaguchi, Tokorozawa City **GO** Right next to Seibu Kyujo-mae Station on the Seibu Sayama Line (change from the Seibu Ikebukuro Line at Nishi-tokorozawa Station) **MAP** B-3



### Sayama Ski Slope

An all-weather covered ski slope next door to the Belluna Dome. The 300 meter-long course is covered with artificial snow, so you can always ski under optimum conditions. The ski slope will reopen in 2020 after refurbishments and the addition of a new kids' area separate from the main slope. Young children can enjoy playing in the snow without any concerns. Events such as all-night skiing and experiences for kids are held, and there are plenty of rental skis, so you do not need to bring anything with you. **📍** 2167 Kami-yamaguchi, Tokorozawa City **☎** 04-2922-1384 10:00 - 21:00 no holidays during the season **GO** 3 minutes on foot from Seibu Kyujo-mae Station on the Seibu Sayama Line **MAP** B-3



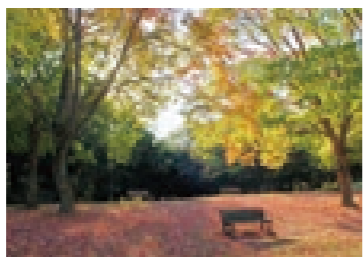




### Tokorozawa Aviation Memorial Park

This park was built on the site of Tokorozawa Airfield, the first public airfield in Japan. The park contains not only a C-46 medium-sized transport plane used by the Air Self-Defense Force but also a children's play area, dog run, outdoor stage, and more, so that it can be enjoyed all year round.

📍 1-13 Namiki, Tokorozawa City ☎ 04-2998-4388 Car park with 580 spaces (free for up to two hours) **GO** Right next to East Exit of Koku Koen Station on the Seibu Shinjuku Line. **MAP D-2**



### Plaza in front of Koku Koen Station

When you come out of the station, you are greeted by a YS-11 passenger plane, the first developed and manufactured in Japan in the post-War period.

## TOKOROZAWA

# 04

In 1911, airplanes took off into the heavens from here.  
A park where both aviation fans and novices can feel at home.

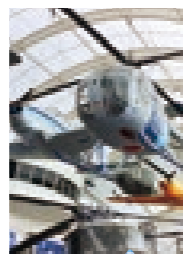


### Tokorozawa Aviation Museum

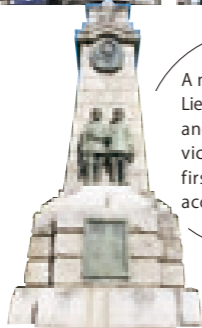
A museum containing materials relating to the history of aviation, as well as model airplanes. If you try your hand at controlling a plane with the flight simulator, you can feel like a pilot!

📍 Inside Tokorozawa Aviation Park, 1-13 Namiki, Tokorozawa City ☎ 04-2996-2225 9:30 - 17:00 (last entry 16:30) Closed Mondays (except for national holidays, when it is closed the following day) and during the New Year's holiday period **GO** 8 minutes on foot from East Exit of Koku Koen Station on the Seibu Shinjuku Line.

**MAP D-2**



A monument to Lieutenants Kimura and Tokuda, the victims of Japan's first aviation accident in 1913.



Colonel Faure, a Frenchman who devoted great energy to the progress and development of Japan's aeronautical technology.



### The Japanese Tea Garden Saisho-tei

A tea room where you can readily learn more about and enjoy the "tea ceremony", part of Japan's traditional culture. You can enjoy powdered green tea from Sayama as you gaze at the beautiful formal garden.

📍 Inside Tokorozawa Aviation Park, 1-13 Namiki, Tokorozawa City ☎ 04-2991-4310 10:00 - 16:00 (15:45 LO) Open all year round **GO** 5 minutes on foot from East Exit of Koku Koen Station on the Seibu Shinjuku Line.

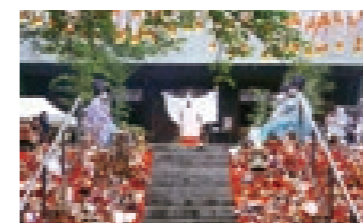
**MAP D-2**



### Tokorozawa Shinmeisha Shrine

The guardian deity of the former Tokorozawa Town. It is famous for the earliest fair in Japan selling decorative bamboo rakes believed to bring good fortune (January 1 - 3). Tokorozawa, where there is a thriving production of dolls and ornamental battledores, is also known as a town of dolls, and a memorial service for dolls offered from around the country is held on the first Sunday in June.

📍 1-2-4 Miyamotocho, Tokorozawa City ☎ 04-2922-3919 **GO** 3 minutes on foot from the "Tokoro Iriguchi" stop of Tokoro Bus "Yamaguchi Circular Course" **MAP C-2**



## TOKOROZAWA

# 05

Why not seek good fortune from the gods of Tokorozawa?



### Tamon-in Temple

The principal image is a golden Vaisravana, a guardian god, said to have been the guardian deity of Shingen Takeda. 300 peonies decorate the precincts in spring. On May 1 each year, a Tiger Festival is held at which worshippers petition the tiger which is the incarnation of the Vaisravana.

📍 1501 Nakatomi, Tokorozawa City ☎ 04-2942-0814 **GO** 7 minutes on foot from stop 20, "Tamon'in Dori Nishi" of Tokoro Bus "Northern Route Tomioka Circular Course"

**MAP D-1**



### Shiroyama Jinjya Shrine / Takino Jyoshi Park

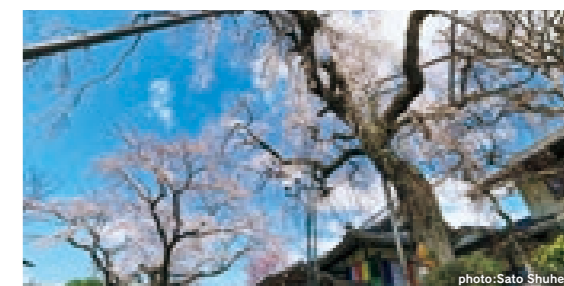


Shiroyama Shrine is inside the park built on the site of Takino Castle, said to have belonged to Ujiteru Hojo. As well as the dogtooth violets in the park, the cherry blossom is a sight to see. Also, the "Warring States Takino Castle Festival" is held each year on the third Sunday in May, with a procession of warriors and a mock battle. 📍 537 Shiro, Tokorozawa City ☎ 04-2944-3704 **GO** 10 minutes on foot from "Shiro" stop of Seibu Bus' route departing from the East Exit of Tokorozawa Station on the Seibu Ikebukuro Line or the Seibu Shinjuku Line. **MAP F-2**



### Konjo-in Temple (Yamaguchi Kannon)

A temple of the Shingon sect of Buddhism, said to have been founded by the famous monk Kobo Daishi. There are two thousand-armed Kannon statues. The statue at the rear is ordinarily kept hidden from view, but is revealed to the public once every 33 years. There is also the Yoshisada Horseback Statue, showing Yoshisada Nitta astride his beloved horse. 📍 2227 Kami-yamaguchi, Tokorozawa City ☎ 04-2922-4258 9:30 - 17:00 **GO** 8 minutes on foot from Seibu Kyujo-mae Station on the Seibu Sayama Line (change from the Seibu Ikebukuro Line at Nishi-tokorozawa Station) **MAP B-3**



### Kosenji Temple

The temple was established as far back as the Heian Period. There is a famous weeping cherry tree planted around 150 years ago which has a very beautiful shape. 📍 343 Horinouchi, Tokorozawa City ☎ 04-2948-1915 **GO** About 15 minutes on foot from stop 27, "JA Mikajima Shiten-kita" of Tokoro Bus "Shin-tokorozawa/ Mikajima Course" from South Exit of Kotesashi Station on the Seibu Ikebukuro Line **MAP A-2**

# Drink your fill of Sayama tea, a specialty of Tokorozawa.



## Sayama tea

Tokorozawa City is second only to Iruma City in the amount of Sayama tea it produces. Sayama tea, a specialty of Tokorozawa, is so tasty that the saying goes "Shizuoka for the color, Uji for the scent, but Sayama has the last word on taste." Sayama tea is grown throughout the city, but Mikajima and Tomioka districts have particularly extensive areas of tea cultivation and produce large volumes. Most tea growers produce tea in an independent manner, growing, manufacturing, and selling the tea themselves. In Tokorozawa, you can visit a tea garden or a shop offering tastings of Sayama tea.



## Araienhonten in Musashirikyū

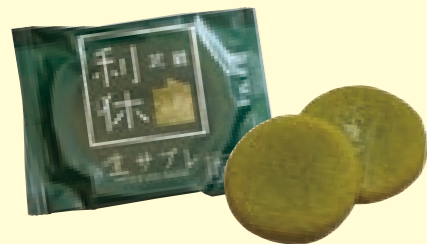
A long-established and eco-certified tea farmer with its own tea garden and processing plant. In addition to stocking a variety of teas, including hand-picked tea, the "Musashirikyū" tea cafe at the back of the shop offers varied and delicious sweets using Sayama tea, such as green tea bracken-starch dumplings. **◆** 1-15-5 Kotesashicho, Tokorozawa City **☎** 04-2941-3399 10:00 - 18:00 (Musashirikyū: 11:00 - 17:30 (17:00 LO)), closed Wednesdays (subject to change) **≒GO** 3 minutes on foot from the North Exit of Kotesashi Station on the Seibu Ikebukuro Line **MAP** C-2

## Sayamaen Ltd., Wada Tea Shop

The store deals in everything from top-grade tea hand-picked in its own tea garden to teas recommended for everyday use, including tea bags made from hand-picked tea. Inside, you can enjoy green tea and hand-picked tea, as well as sweets such as green tea wafers filled with ice cream. **◆** 3-1157-3 Mikajima, Tokorozawa City **☎** 04-2948-0626 9:00 - 18:00 Open all year round **≒GO** 5 minutes on foot from stop 32, "Dainichido" of Tokoro Bus "Shin-tokorozawa/ Mikajima Course", which departs from North Exit of Kotesashi Station and the West Exit of Sayamagaoka Station on the Seibu Ikebukuro Line **MAP** B-2

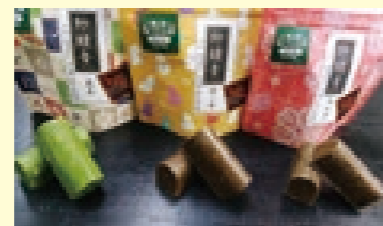


## Sweets made with Sayama tea



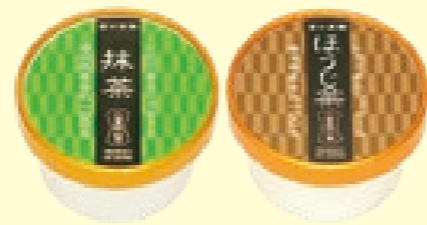
### Tea house fresh shortbread

Made with plenty of "Musashi no midori" tea, an original variety of Sayama green tea. White chocolate is sandwiched between soft and moist fresh shortbread. The luxurious packaging is also distinctive. **◆** Araienhonten, 1-15-5 Kotesashicho, Tokorozawa City **☎** 04-2941-3399 10:00 - 18:30 Closed on Wednesdays (subject to change) **≒GO** 3 minutes on foot from the North Exit of Kotesashi Station on the Seibu Ikebukuro Line **MAP** C-2



### Sayane

Powdered tea leaves produced by Tokorozawa's Kurodaen tea garden are sprinkled throughout this crunchy chocolate. A sweet treat for adults, bringing out the best of Sayama tea's distinctively intense and bitter flavor. **◆** Pâtisserie La Liberté, 1F 12-4 Matsubacho, Tokorozawa City **☎** 04-2998-7001 12:00 - 21:00 Closed Wednesdays **≒GO** 3 minutes on foot from the East Exit of Shin-tokorozawa Station on the Seibu Shinjuku Line **MAP** C-2



### Sayama green tea Italian gelato

Genuine Italian gelato made with Sayama roasted green tea grown by people with disabilities, Sayama powdered green tea, and milk produced in Saitama. This reduced-calorie, healthy ice cream has a rich yet refreshing taste. **◆** Santome Sayama Tea Fujimien, 807 Oaza Shimotomi, Tokorozawa City **☎** 04-2942-0609 10:00 - 18:00 Closed Mondays (where Monday is a national holiday, closed the following Tuesday) **≒GO** From the East Exit of Shin-Tokorozawa Station on the Seibu Shinjuku line, take a bus for Seibu Flower Hill, get off at Jushiken bus stop, and walk southwards for 5 minutes. **MAP** C-1

## Tokorozawa meat broth udon noodles

A lot of wheat has been grown in Tokorozawa, which lies on the Musashino Plateau, since long ago, and there has been a tradition of eating hand-cut udon noodles. Nowadays, there are many udon restaurants within the city, and you can enjoy "meat broth udon", a Tokorozawa specialty. Tokorozawa meat broth udon is characterized by chewy noodles and a soy sauce-based broth infused with the juices of the ample amount of meat it contains.

Tokorozawa meat broth udon pamphlet



## Eat your fill of Tokorozawa's local dishes.

Meat broth udon? It has to be Tokorozawa!! There are lots of delicious shops!! And the roasted soy sauce smell of grilled rice dumplings, Tokorozawa's soul food, is the best!!



Tokorozawa Tourism Ambassador Taichi Sera, JAY'S GARDEN

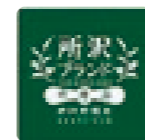


## Grilled rice dumplings

Rice flour mixed with water is kneaded and formed into balls. These are steamed and then threaded onto a bamboo skewer, brushed with soy sauce, and grilled over charcoal or similar to make this Tokorozawa soul food. You won't be able to get enough of the chewy texture of the rice flour and the delicious smell of the soy sauce! This local food has been loved by the people of Tokorozawa for generations.

- Musashiya**  
◆ 1-8-14 Miyamotocho, Tokorozawa City  
☎ 04-2922-5614  
Closed Tuesdays and the third Wednesday of the month
- Namikiya**  
◆ 6-5 Miyukicho, Tokorozawa City  
☎ 04-2922-3277  
Open all year round
- Gekka**  
◆ 1024-76 Kamiyasumatsu, Tokorozawa City  
☎ 04-2936-7187  
Closed Thursdays
- Yamaguchiya Dangoten**  
◆ 3-22-30 Kami-arai, Tokorozawa City  
☎ 04-2926-5882  
Closed Mondays and Tuesdays
- Nomura Shoten**  
◆ 861 Shiro, Tokorozawa City  
☎ 04-2944-0482  
Closed Wednesdays

## Tokorozawa brand specialty products



Products certified by Tokorozawa City as particularly fine and attractive goods which seek to encapsulate the essence of Tokorozawa. All these products, which include Japanese and Western-style sweets and locally brewed sake and beer, make the most of Tokorozawa's agricultural produce and of its history and traditions. Why not take some home as gifts from your visit to Tokorozawa?

Tokorozawa brand specialty products official website



There are so many delicious products using Tokorozawa produce such as Sayama tea, taro, carrots, and more! You can't go wrong if you bring Tokorozawa brand specialty products home as gifts.

Tokorozawa Tourism Ambassador Noritoshi Sakurada, JAY'S GARDEN





# Enjoy picking delicious fruit at a tourist farm.

## Tokorozawa's tourist farms

You will find all kinds of tourist farm in the city, so you can enjoy picking fruit almost the whole year round. Don't miss these freshly-picked flavors!

◆ Tokorozawa Sightseeing Association  
☎ 04-2935-3151

Tourist farm map



### fruit picking Fruit picking



Grape picking

From early August to late September. You can pick many different varieties of grape, including Bailey A, Kyoho, Himrod, and Campbell.



Strawberry picking

From early December to late May. The "all you can eat within 30 minutes" option is particularly popular with parents and children (direct sales only in December). There is also a wide path for wheelchairs.



Bamboo shoot digging

From early April to early May. Freshly-dug bamboo shoots are delicious either boiled or grilled! How about making seasonal bamboo shoot rice with a bamboo shoot you have dug up yourself?



Blueberry picking

From late-June to early August. Blueberries are both delicious and good for your eyes. They grow at a height which makes them easy for children to reach. Eat them as they are, freeze them, or make them into jam.



Asian pear picking

From mid-August to early September. One variety comes into season after another: Kosui, Hosui, 20th Century, and many more... Juicy, freshly-picked Asian pears are perfect for dessert.



Sweet Potato

From mid-September to late October. You can try your hand at digging up sweet potatoes, the taste of fall. There's nothing like a sweet potato you dug up yourself!



Chestnut gathering

From early September to early October. Chestnuts are one of the distinctive tastes of fall. There are various ways to eat them: chestnut rice, chestnuts in azuki bean jelly, mashed sweet potatoes with sweetened chestnuts...

Winter strawberries! Spring bamboo shoots! Summer blueberries! In fall, there are grapes, Asian pears, and sweet potatoes! There are shiitake mushrooms and kiwi fruits, too! Tokorozawa is pretty amazing: you can pick tasty things so close to Tokyo all year round!



Tokorozawa Tourism Ambassador  
Yusuke Yamada, JAY'S GARDEN

### Introducing: Tokorozawa Tourism Ambassador

Tokorozawa Tourism Ambassadors are appointed in order to introduce Tokorozawa's attractions as widely as possible, both within the city and beyond, to enhance the city's image, and to promote tourism.

#### Saitama Broncos



Appointed in Heisei 21 (2009). At the same time as playing heated matches around the country, they are promoting Tokorozawa.



#### Toshiaki Kasuga (Audrey)



Appointed in Heisei 25 (2013). Of the comedy duo "Audrey". His trademark is a pink waistcoat. He is promoting Tokorozawa through the media.



#### JAY'S GARDEN



Appointed in Heisei 27 (2015). A J-POP vocal group formed in Tokorozawa. They sing Tokoron's theme song, "Toko Toko Tokoron!"



#### Sumo wrestler Hokutofuji



Appointed in Heisei 28 (2016). The first senior-grade sumo wrestler from Tokorozawa. His pushing technique is his strong point. He belongs to the Hakkaku stable.



### Tokoron, Tokorozawa's mascot

This is Tokoron, Tokorozawa City's mascot. The concept behind Tokoron is the lark, the city's bird. He has a propeller on his head, representing a propeller plane, since the city is where Japanese aviation began. The green scarf around his neck represents Sayama tea, Tokorozawa City's specialty. Tokoron was born in Heisei 22 (2010) as one aspect of the 60th anniversary of the incorporation of Tokorozawa as a municipality.

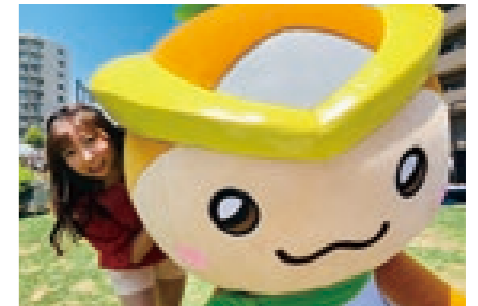
Twitter  
@tokoron1056



Instagram  
@tokoron1056



Facebook  
@tokorozawashi  
syougyoukankouka



Tokoron's attendant: Ai Munakata

## Events and Spots

#### Tokorozawa Festival

Tokorozawa's biggest and best-loved fall event. Portable shrines and floats with a long history are carried and pulled through the streets. A parade also takes place, and the festival draws crowds of over 200,000 people, generating an atmosphere of enthusiasm and excitement.



#### Tokorozawa Citizens' Culture Fair

An event which takes place each year on a Saturday and Sunday in early April in order to commemorate Tokorozawa as the birthplace of Japanese aviation and to encourage cultural exchange among citizens. A folk dance festival is also held.



#### Tokorozawa Citizens Festival

An event planned and run by the citizens themselves, which takes place in Tokorozawa Aviation Park. As well as a local goods and food-tasting booth run by Tokorozawa Sightseeing Association, there are long rows of stalls, and various events such as concerts and street performances take place.



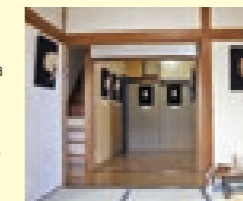
#### Tokorozawa Community-building Store (Machizo)

Various exhibitions, events, and other activities are held here in partnership with the shopping street, with the aim of revitalizing Tokorozawa city center. ◆ 21-18 Motomachi, Tokorozawa City ☎ 04-2928-1453 10:00 - 18:00 Closed Thursdays ≒GO 3 minutes on foot from the "Tokorozawa Machizukuri Center" stop of Tokoro Bus "Yamaguchi Circular Course" MAP D-2



#### Nomen Art Museum

Around 20 masks made by contemporary Noh mask craftsman Gensei Fukuyama are on permanent display. Admission: 300 yen. ◆ 893-15 Kamiyasumatsu, Tokorozawa City ☎ 090-1708-8468 Open 11:00 - 16:00 on the first and third Fridays, Saturdays, and Sundays of the month ≒GO From Tokorozawa Station on the Seibu Ikebukuro and Seibu Shinjuku lines, take a Seibu bus for Higashi-Tokorozawa Station, get off at Matsui bus stop, and walk for 2 minutes. MAP D-2



#### Tokorozawa Civic Cultural Centre "Muse"

A cultural complex which is home to one of the largest pipe organs in the country. Diverse events are held here, including concerts, theater, rakugo performances, and exhibitions. ◆ 1-9-1 Namiki, Tokorozawa City ☎ 04-2998-6500 ≒GO 10 minutes on foot from East Exit of Koku Koen Station on the Seibu Shinjuku Line MAP D-2



# Tokorozawa Guide Map



**Sunagawabori Weeping Cherry Trees**

In bloom: late March - early April  
Along Sunagawabori in Kotesashicho, Tokorozawa City (around 500 m)



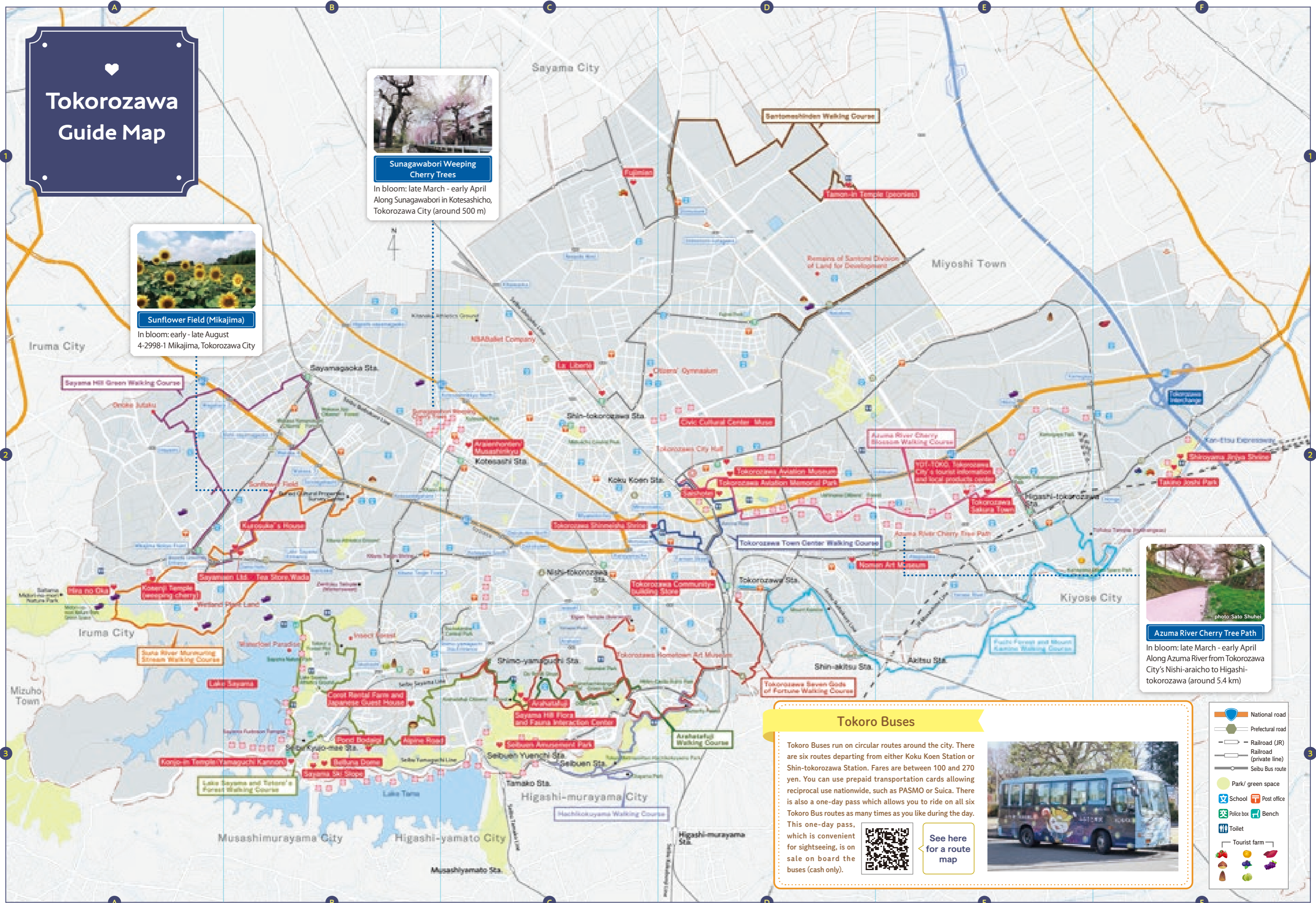
**Sunflower Field (Mikajima)**

In bloom: early - late August  
4-2998-1 Mikajima, Tokorozawa City



**Azuma River Cherry Tree Path**

In bloom: late March - early April  
Along Azuma River from Tokorozawa City's Nishi-araicho to Higashi-tokorozawa (around 5.4 km)



### Tokoro Buses

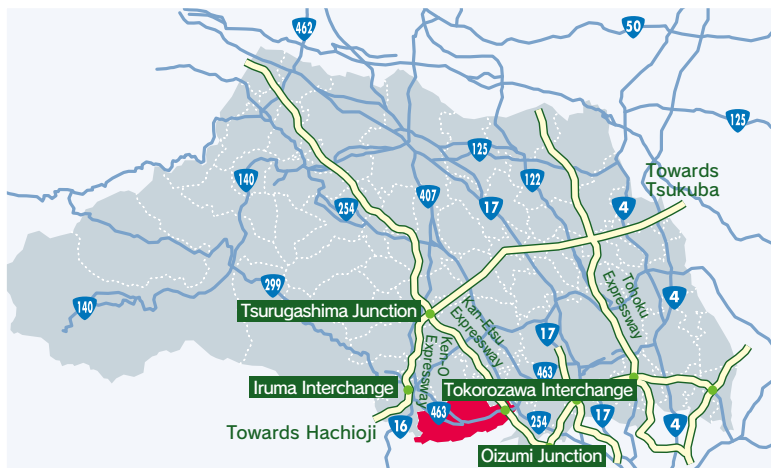
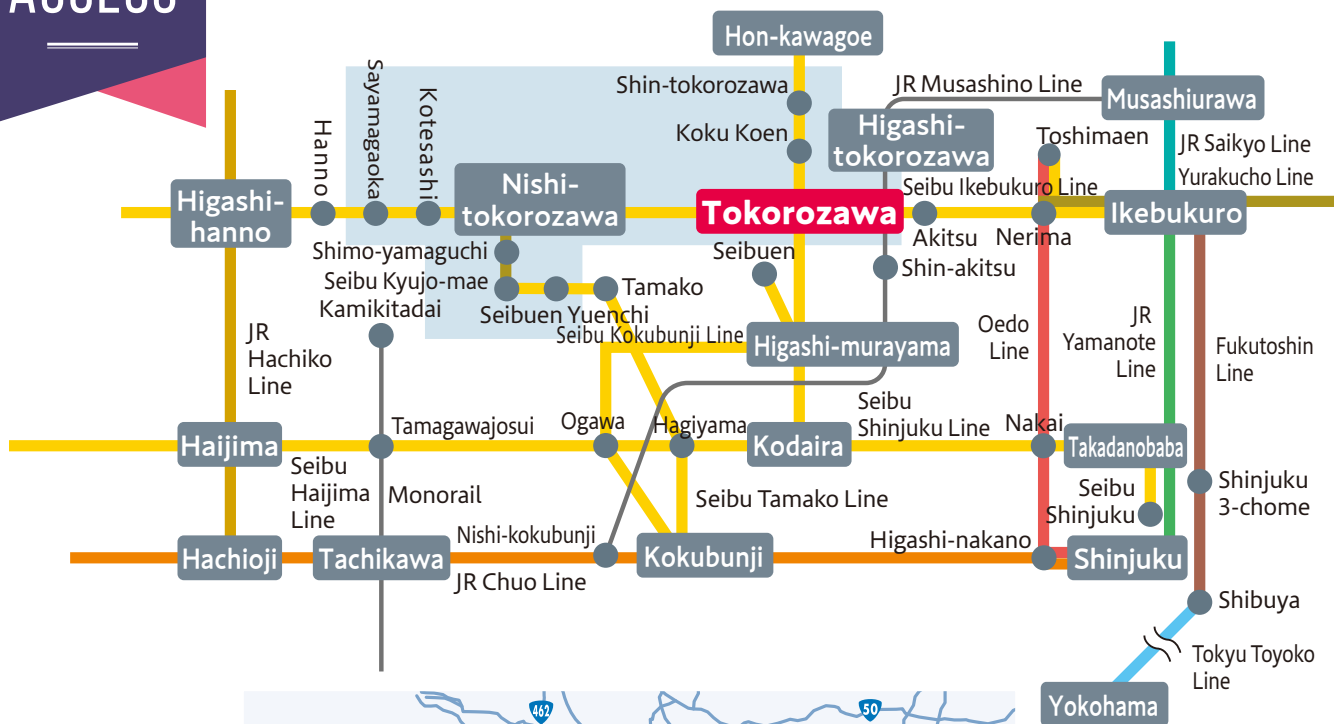
Tokoro Buses run on circular routes around the city. There are six routes departing from either Koku Koen Station or Shin-tokorozawa Station. Fares are between 100 and 270 yen. You can use prepaid transportation cards allowing reciprocal use nationwide, such as PASMO or Suica. There is also a one-day pass which allows you to ride on all six Tokoro Bus routes as many times as you like during the day. This one-day pass, which is convenient for sightseeing, is on sale on board the buses (cash only).

See here for a route map

- National road
- Prefectural road
- Railroad (JR)
- Railroad (private line)
- Seibu Bus route
- Park/ green space
- School
- Post office
- Police box
- Bench
- Toilet
- Tourist farm



# ACCESS



**Tokoron,**  
Tokorozawa's mascot

## By car

- Kan-Etsu Expressway Tokorozawa Interchange → Around 6 km, 15 minutes by Route 463
- Ken-O Expressway Iruma Interchange → Around 10 km, 20 minutes by Route 463 (bypass)

**Tokorozawa city area**

## By train

- Ikebukuro → 23 minutes by express train
- Takadanobaba → 33 minutes by express train
- Hanno → Around 23 minutes by express train
- Yokohama → Around 68 minutes by the fastest route

**Tokorozawa**



**Commerce and Tourism Section,  
Industrial&Economic Affairs Department,  
Tokorozawa City**

1-1-1 Namiki, Tokorozawa City, Saitama Prefecture 359-8501

TEL.04-2998-9155 (Direct phone)

<https://www.city.tokorozawa.saitama.jp>

With the cooperation of: Tokorozawa Sightseeing Association



Facebook



Twitter



Instagram

